

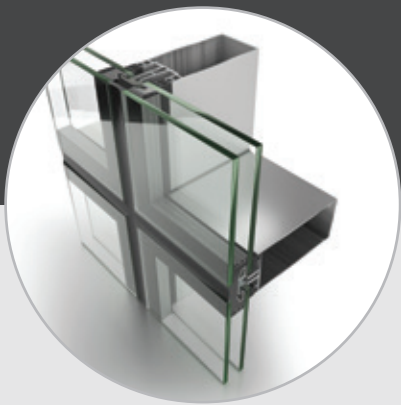


The presented performance classes do not necessarily refer to a single specimen. Please contact ETEM Technical Department for specific requests and configurations.

EF50

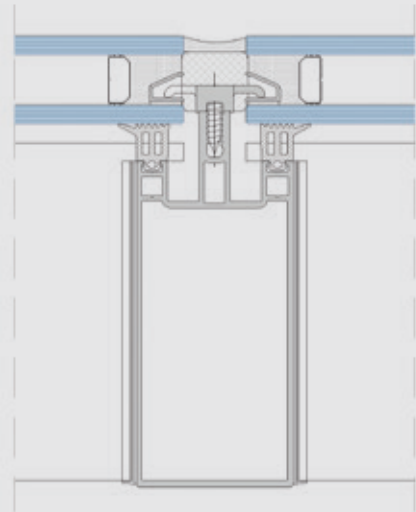
CURTAIN WALL SYSTEM (STRUCTURAL GLAZING VERSION)

A new generation 50mm curtain wall system, designed for stick or bonded glazed facades. It provides material optimal solutions with exceptionally high testing performances. It can support wide range of projects profiles for custom applications.



TECHNICAL FEATURES

System basic width:	50mm
Min./max. system basic depth:	64mm / 249mm
Glazing infill range:	28 ÷ 34mm



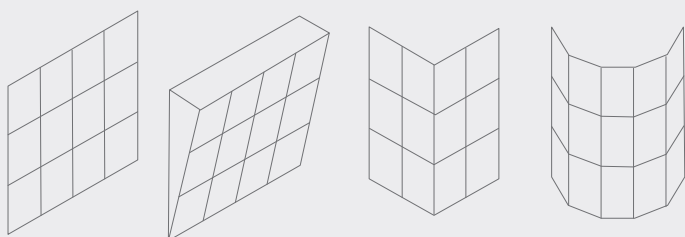
PERFORMANCE*

Air permeability:	up to Class AE
Watertightness [static]:	up to Class RE1500
Resistance to wind load [Design load]:	up to $\pm 1,6 \text{ kN/m}^2$
Resistance to wind load [Safety load]:	up to $\pm 2,4 \text{ kN/m}^2$
Thermal transmittance (U_f):	from $1,3 \text{ W/(m}^2\text{K)}$
Impact resistance:	up to Classes I4/E5
Acoustic performance:::	up to 45dB



TYOLOGIES

- o Fully capped (wide range of face cap options)
- o Horizontal cap with flush
- o Vertical cap with flush
- o Four-sided structural silicone glazed
- o Vertical, slanting, polygonal level curtain walls



HARDWARE

EPDM gaskets
Incorporation of ETEM systems as infills

SURFACE TREATMENT

QUALICOAT - Powder coating
QUALANOD - Anodising
QUALIDECO - Wood effects