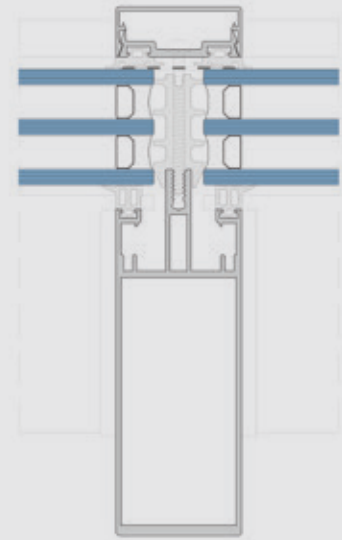
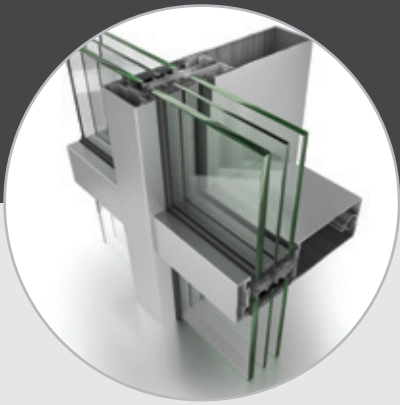


\* The presented performance classes do not necessarily refer to a single specimen. Please contact ETEM Technical Department for specific requests and configurations.

# E85

## CURTAIN WALL SYSTEM (COVER CAP VERSION)

A 50mm curtain wall system, capable to offer a wide variety of solutions. It provides stick or bonded glazed options. It can support wide range of projects profiles for custom applications, as well as solutions to sloped constructions. Integration with projected constructions and incorporation to projected or parallel projected infills are available.



### TECHNICAL FEATURES

System basic width:	50mm
Min./max. system basic depth:	50mm / 230mm
Glazing infill range:	24 ÷ 42mm

### PERFORMANCE\*

Air permeability:	up to Class AE
Watertightness [Static]:	up to Class RE900
Resistance to wind load [Design load]:	up to $\pm 1,6 \text{ kN/m}^2$
Resistance to wind load [Safety load]:	up to $\pm 2,4 \text{ kN/m}^2$
Thermal transmittance (Uf):	from $1,6 \text{ W/(m}^2\text{K)}$
Impact resistance:	up to Classes I4 / E4
Acoustic performance:	up to 52 dB
Burglar Resistance:	up to Class WK4
Bullet Resistance:	up to Class FB6



### TYOLOGIES

- o Fully capped (wide range of face caps options)
- o Horizontal cap with flush
- o Vertical cap with flush
- o Four-sided structural silicone glazed
- o Vertical, slanting, polygonal level curtain walls



**ETEM**

### HARDWARE

EPDM gaskets  
Integration with projected constructions  
Incorporation of ETEM systems as infills

### SURFACE TREATMENT

QUALICOAT - Powder coating  
QUALANOD - Anodising  
QUALIDECO - Wood effects