

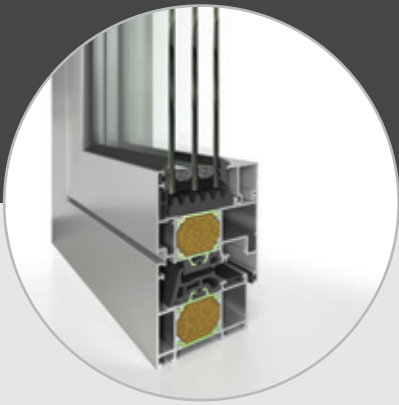


* The presented performance classes do not necessarily refer to a single specimen. Please contact ETEM Technical Department for specific requests and configurations.

E68

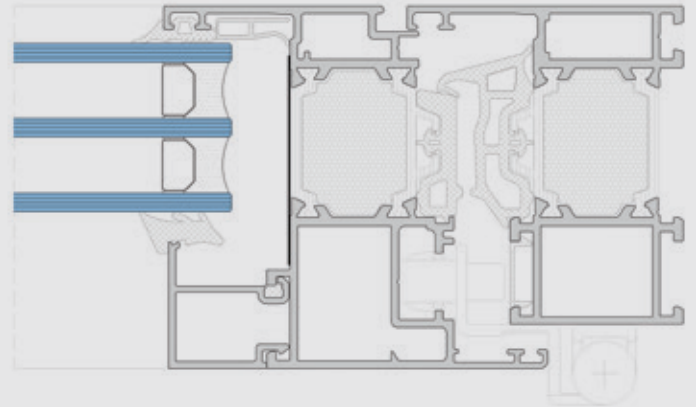
OPENING SYSTEM

A high-end opening window system with thermal break. It provides solutions to several configurations thanks to its wide profile range. Special hidden vent and ventilation vent solutions are supported, as well as integration with shutter or rolling shutter.



TECHNICAL FEATURES

Frame width:	68mm
Min. frame height:	59mm
Min. casement height (f+v):	78mm / 106mm
Glazing infill range:	8 ÷ 58mm



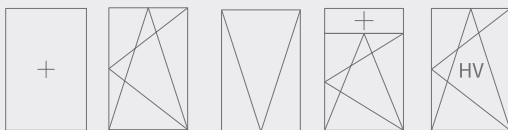
PERFORMANCE*

Air permeability:	up to Class 4
Watertightness:	up to Class E1500
Resistance to wind load:	up to Class C5
Thermal transmittance (U_f):	from 1,7 W/(m ² K)
Acoustic performance:	up to 44 dB



TYOLOGIES

- Turn, tilt & turn, tilt, projecting, folding, fixed, parallel sliding, hidden vent
- Single & double leaf
- Inward opening



HARDWARE

Eurogroove & PVC groove
Concealed hinges
Max. vent weight: 130kg

SURFACE TREATMENT

QUALICOAT - Powder coating
QUALANOD - Anodising
QUALIDECO - Wood effects