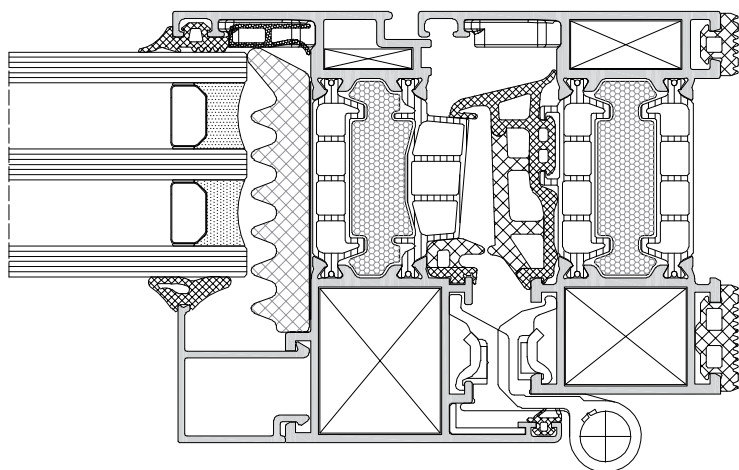


E75 Opening Window System



Optimized for advanced mechanical performances.
Straight line profiles for modern aesthetics. Wide variety of features and typologies are available.



Technical features

- Straight line
- Glazing infill : up to 55mm in frame
- Double & triple glazing option
- Frame depth: 75 mm
- Vent depth: 84.5 mm
- Min. height (frame+leaf):107 mm
- Compatible with curtain wall system
- Energy efficiency concepts: Advanced, Improved & Basic

Performance

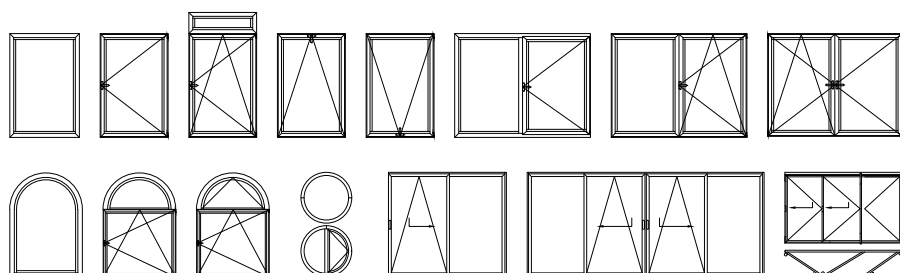
Air Permeability:	up to Class 4
Watertightness:	up to class E1500
Resistance to wind load:	up to class C5
Thermal transmittance (U_p):	from 1.2 W/(m²K)
Acoustic performance:	up to 46 dB
Burglar resistance:	up to class RC2

Hardware

- Extruded aluminium corners
- Eurogroove + PVC groove
- Max. vent weight:170 mm
- Concealed hinges
- Multiple locking points

Typologies

- Turn, tilt & turn, tilt, projecting, folding, fixed, parallel sliding, door-height window
- Single & double leaf
- Rectangular, variable angle & bended



Surface treatment options

- RAL colours
- ETEM colours
- Anodising
- Wood effects
- Quality Standards:
 - QUALICOAT
 - QUALANOD
 - QUALIDECO

